

# The World of L.M. Montgomery & Her Fans: Sharing Your LMM Story

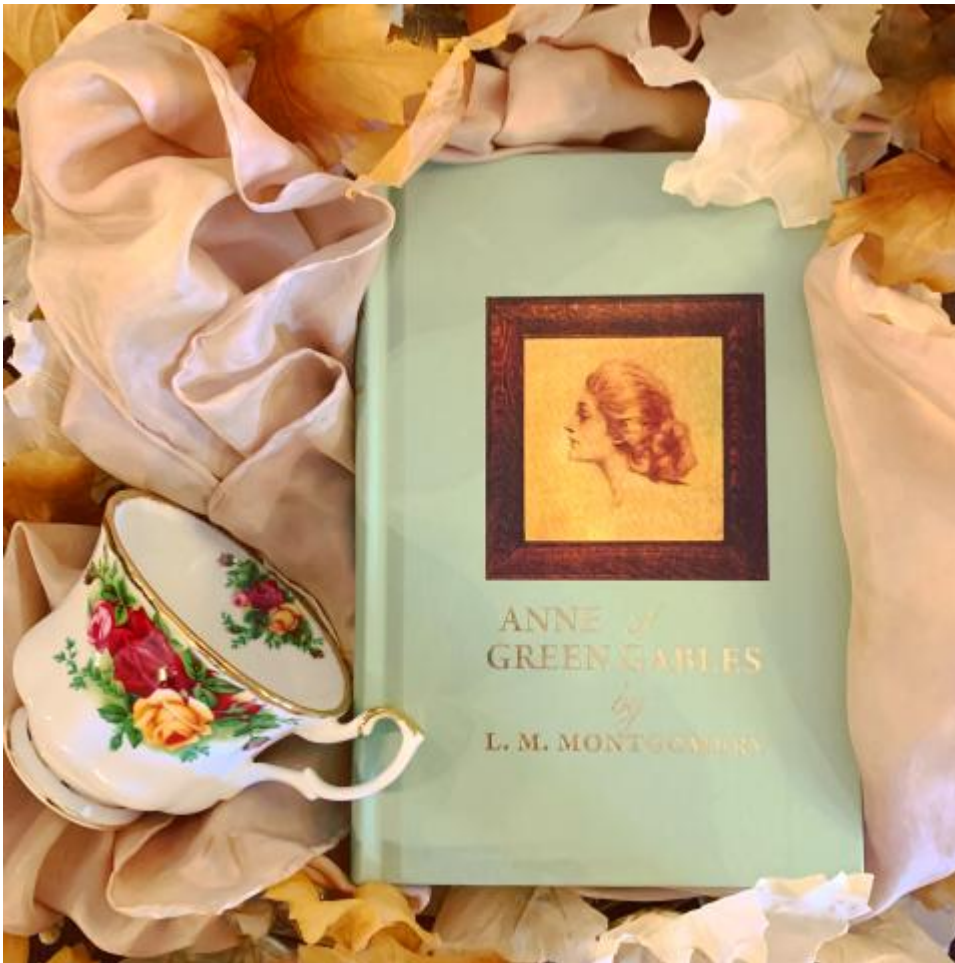
Published on

Fri, 06/26/2020 - 15:54

## **Are you a fan of L.M. Montgomery's world?**

Whether it's the irrepressible Anne, the writerly Emily, the gorgeous landscapes within *The Blue Castle* and *The Story Girl*, one of the many stage or screen adaptations of Montgomery's work, or something else entirely, we want to hear from you!

Please help current and future scholars study the international appeal of L.M. Montgomery and her work by answering a few questions about yourself and your love of LMM's world. You can even share the "[origin story](#)" of how you discovered the world of L.M. Montgomery in the first place!



*Anne of Green Gables* with teacup. Photo by Trinna S. Frever, 2020.

Visit [yourlmmstory.com](http://yourlmmstory.com) for more information and [here](#) to share your story (age over-18 only, though parents/guardians can share a LMM story with or on behalf of their children).

**Hear the project coordinators, Trinna S. Frever and Kate Scarth [talk about this project on CBC's Mainstreet with Matt Rainnie.](#)**

Video introduction to the Your LMM Story project. 2020. Presented by Trinna S. Frever and Kate Scarth.

## **The World of L.M. Montgomery & Her Fans - Learn more about sharing Your L.M. Montgomery Story**

W: [yourlmmstory.com](http://yourlmmstory.com)

[Facebook](#), [Instagram](#), [Twitter](#) @yourlmmstory

E: [yourlmmstory@upei.ca](mailto:yourlmmstory@upei.ca)

#yourlmmstory

### **Project Coordinators:**

Trinna S. Frever - [trinnafrever.com](http://trinnafrever.com) / [@trinna\\_writes](#) (on Instagram)

Kate Scarth - [katescarth.com](http://katescarth.com) / [@katescarth](#) (on Twitter)

### **Article Info**

 Copyright: Trinna S. Frever & Kate Scarth, 2020. This work is licensed under a [Creative Commons Attribution 4.0 International License](#).

Peer reviewed

No